

Surface protective materials

# SPV-CB-800K

## Outline

---

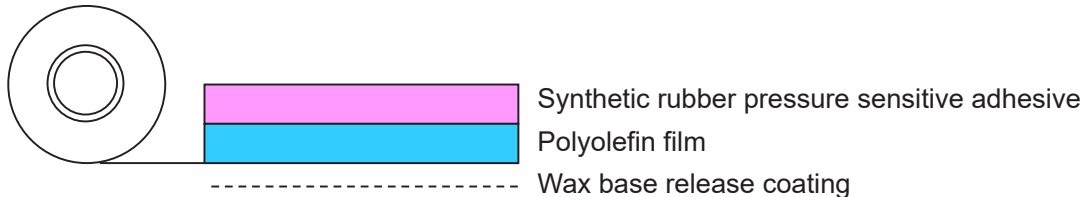
SPV-CB-800K is Surface protective materials for rough surface painted steel plates and rough surface plastic plates as trim materials of automobile.

This product has high adhesion that leaves minimal adhesive residue.

Moreover, it can be used outside.

## Construction

---



## Features

---

- Excellent adhesion for rough surface.
- Excellent adhesive for olefin resin plates.
- Excellent weatherability, suitable for light processing.
- Keeps the colors and shiny evenly.

## Applications

---

Surface protection for painted plates and resin plates (mainly rough surface plates) during process and transportation.

SPV-CB-800K\_US\_E

1/7

2021. 10. 21

**Notes:** This data represents examples of measured values, and not guaranteed values. They do not guarantee compatibility with the applications described in these documents. Please confirm compatibility with your application prior to use. We retain all rights, including copyrights, for the contents of these documents. Copying, reprinting and use for purposes other than originally intended are strictly prohibited without our prior expressed permission. Contact details are provided at the end of this document. Please do not hesitate to contact us for any inquiry.

**Standard Size/Color**

Item	Thickness (mm)	Width (mm)	Length (M)	Color
SPV-CB-800K	0.065	1130	100	White

\*Contact us for information concerning sizes.

**General properties**

Item	Unit	SPV-CB-800K
Thickness *1	mm	0.065
Adhesion*2	N/20mm	11.9
Tensile Strength *3	N/25mm	57
Elongation *3	%	580

\*1: Nominal thickness

\*2: Adherend SUS430BA, Pass over the test piece twice, once in each direction with a 2kg roller  
Tensile speed 300mm/min, Peeling angle 180 deg.

\*3: Tensile speed 300mm/min

**Adhesion on plate:**

JIS-Z-0237,

Tensile speed :0.3m/min

Peeling angle :180degreepeeling at 23degreeC

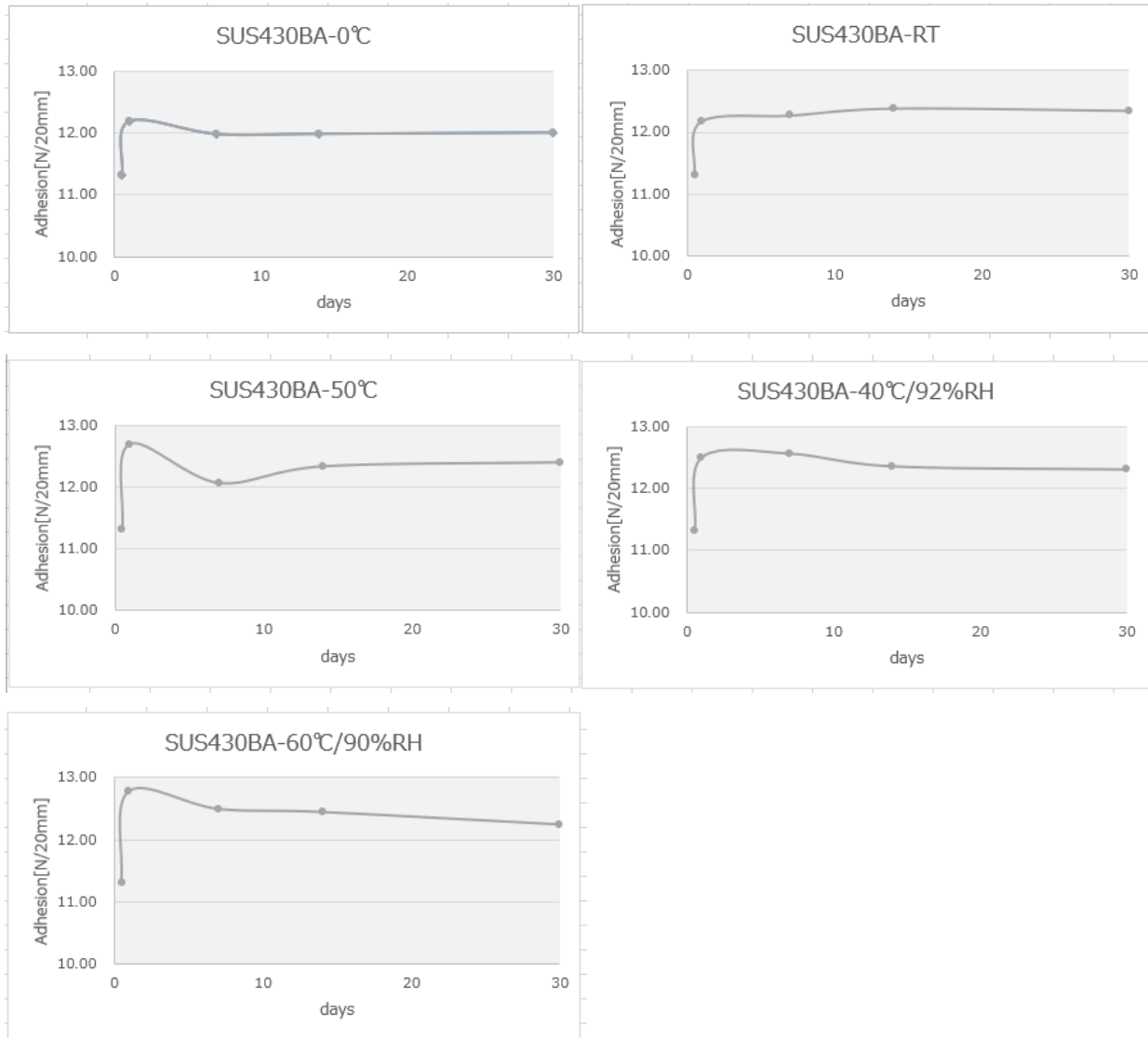
SPV-CB-800K\_US\_E

2/7

2021. 10. 21

**Notes:** This data represents examples of measured values, and not guaranteed values. They do not guarantee compatibility with the applications described in these documents. Please confirm compatibility with your application prior to use. We retain all rights, including copyrights, for the contents of these documents. Copying, reprinting and use for purposes other than originally intended are strictly prohibited without our prior expressed permission. Contact details are provided at the end of this document. Please do not hesitate to contact us for any inquiry.

## SUS430BA

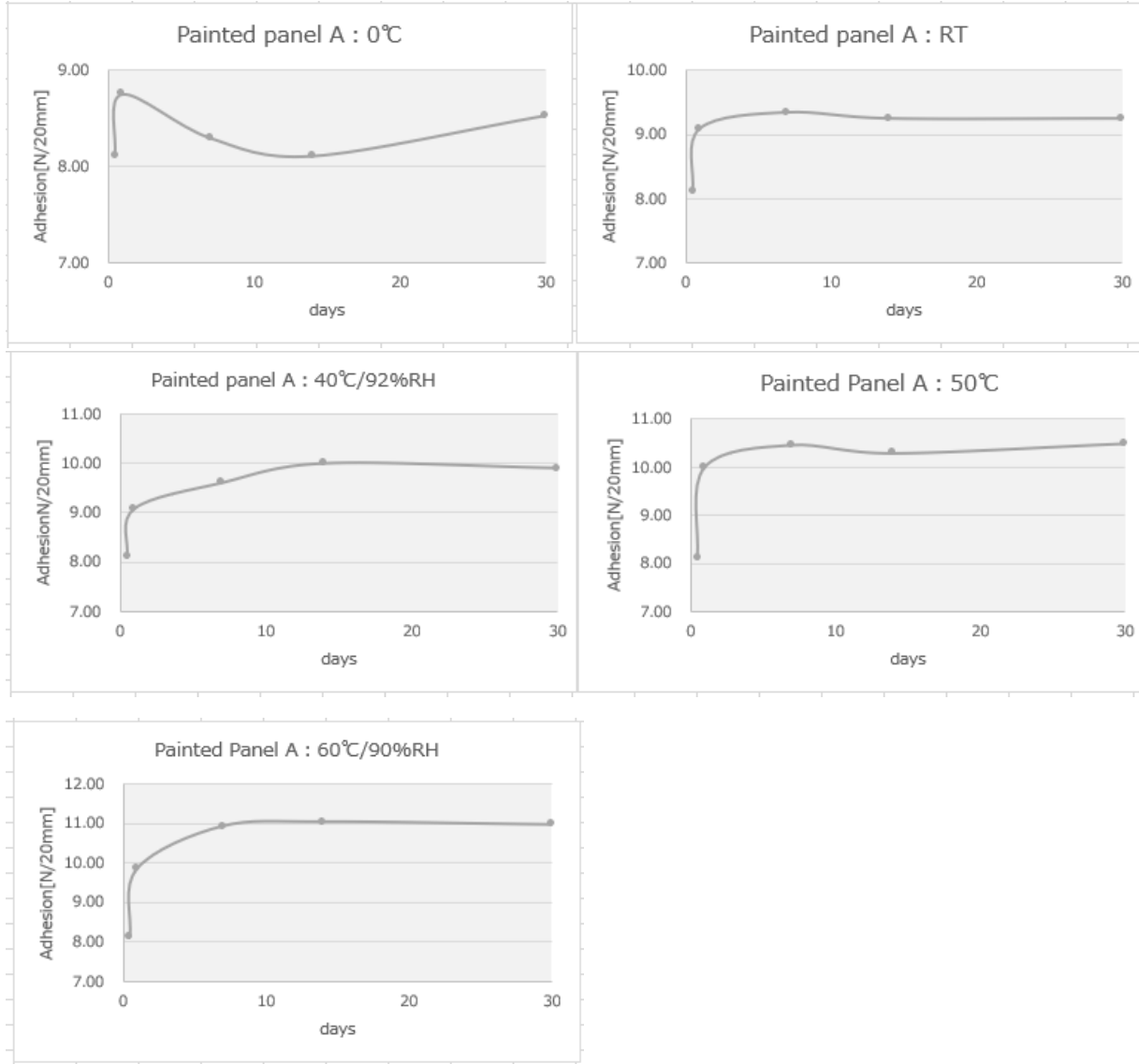


SPV-CB-800K\_US\_E

3/7

2021. 10. 21

**Notes:** This data represents examples of measured values, and not guaranteed values. They do not guarantee compatibility with the applications described in these documents. Please confirm compatibility with your application prior to use. We retain all rights, including copyrights, for the contents of these documents. Copying, reprinting and use for purposes other than originally intended are strictly prohibited without our prior expressed permission. Contact details are provided at the end of this document. Please do not hesitate to contact us for any inquiry.



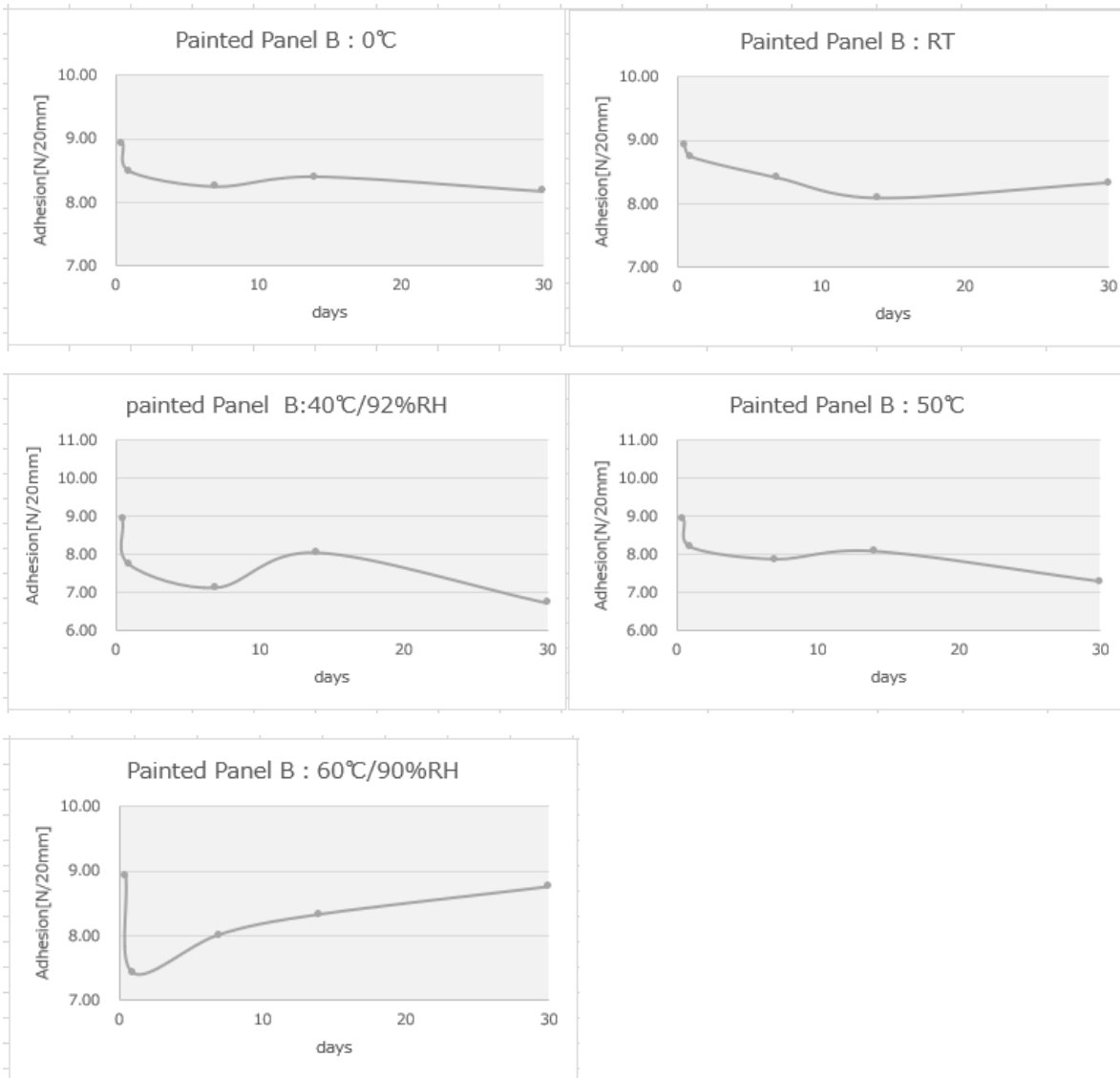
SPV-CB-800K\_US\_E

4/7

2021. 10. 21

**Notes:** This data represents examples of measured values, and not guaranteed values. They do not guarantee compatibility with the applications described in these documents. Please confirm compatibility with your application prior to use. We retain all rights, including copyrights, for the contents of these documents. Copying, reprinting and use for purposes other than originally intended are strictly prohibited without our prior expressed permission. Contact details are provided at the end of this document. Please do not hesitate to contact us for any inquiry.

### Painted Panel B



SPV-CB-800K\_US\_E

5/7

2021. 10. 21

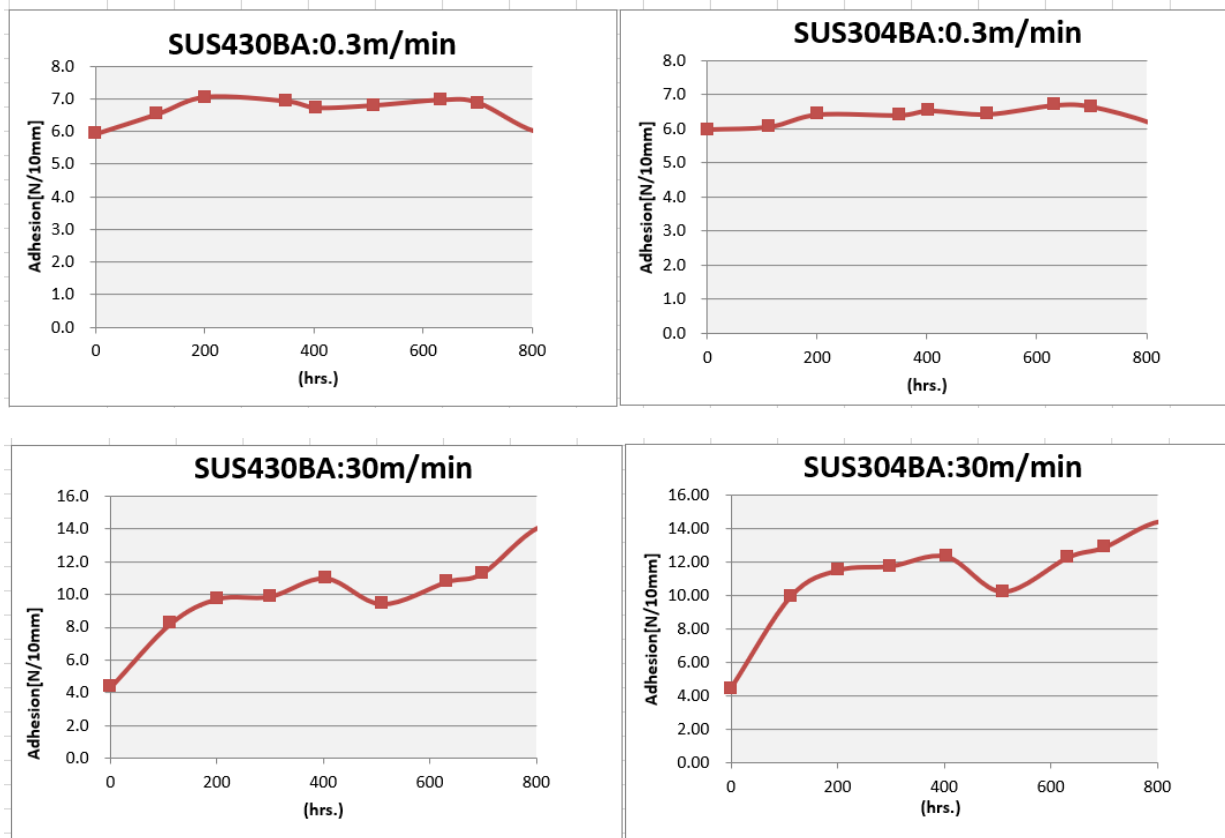
**Notes:** This data represents examples of measured values, and not guaranteed values. They do not guarantee compatibility with the applications described in these documents. Please confirm compatibility with your application prior to use. We retain all rights, including copyrights, for the contents of these documents. Copying, reprinting and use for purposes other than originally intended are strictly prohibited without our prior expressed permission. Contact details are provided at the end of this document. Please do not hesitate to contact us for any inquiry.

**Weatherability(S.X.W.M.)**

Carbon Arc sunshine weather meter:75W/m<sup>2</sup>(300-400nm) rain:12/60(min)

SUS430BA, 0.3m/min,180degree peeling

1000hrs. is equivalent to 1yestr exposure at Tokyo, Japan.



SPV-CB-800K\_US\_E

6/7

2021. 10. 21

**Notes:** This data represents examples of measured values, and not guaranteed values. They do not guarantee compatibility with the applications described in these documents. Please confirm compatibility with your application prior to use. We retain all rights, including copyrights, for the contents of these documents. Copying, reprinting and use for purposes other than originally intended are strictly prohibited without our prior expressed permission. Contact details are provided at the end of this document. Please do not hesitate to contact us for any inquiry.

**Precautions**

---

- Duly inspect the adaptability of this product to your intended use, prior to its application.  
We may conduct the adaptability test in your favor. However, its content and results do not guarantee your use. It is of your responsibility to ultimately determine its adaptability.
- The characteristics and performance of this product depends on the type of adherend, environment of use, and conditions/period after application. Always test (including the appearance) before changing the adherend (composition/surface roughness), conditions or use.
- When the product is applied to PVC adherends with plasticizer or surface-active adherends (electrolyzed, chemically treated, polished, etc.), it may become difficult to release or may tend to leave deposits, as time passes.
- When applying the product to a display material, test with particular attention on appearance defects. Stain, cloudiness or unevenness may appear on the surface of the display material, depending on its type. Traces of air bubbles may be left if they are trapped during application.
- Aforementioned problems may also arise when the product is stored for a long period of time after application.
- Aforementioned problems may also arise when the product is used outdoors for a long period of time. Fully check before use.
- Remove any grease, moisture or dust on the adherend before application.
- When coating after the surface protective material has been peeled, products should be used upon giving sufficient consideration to surface washing, below-surface processing and sintering conditions and confirming the adhesiveness of the coating.

SPV-CB-800K\_US\_E

7/7

2021. 10. 21

**Notes:** This data represents examples of measured values, and not guaranteed values. They do not guarantee compatibility with the applications described in these documents. Please confirm compatibility with your application prior to use. We retain all rights, including copyrights, for the contents of these documents. Copying, reprinting and use for purposes other than originally intended are strictly prohibited without our prior expressed permission. Contact details are provided at the end of this document. Please do not hesitate to contact us for any inquiry.